

# Welcome to ACSP's Parent Academy!

---

Today's Topic:  
K-2 Assessment  
Preparation  
January 31, 2024

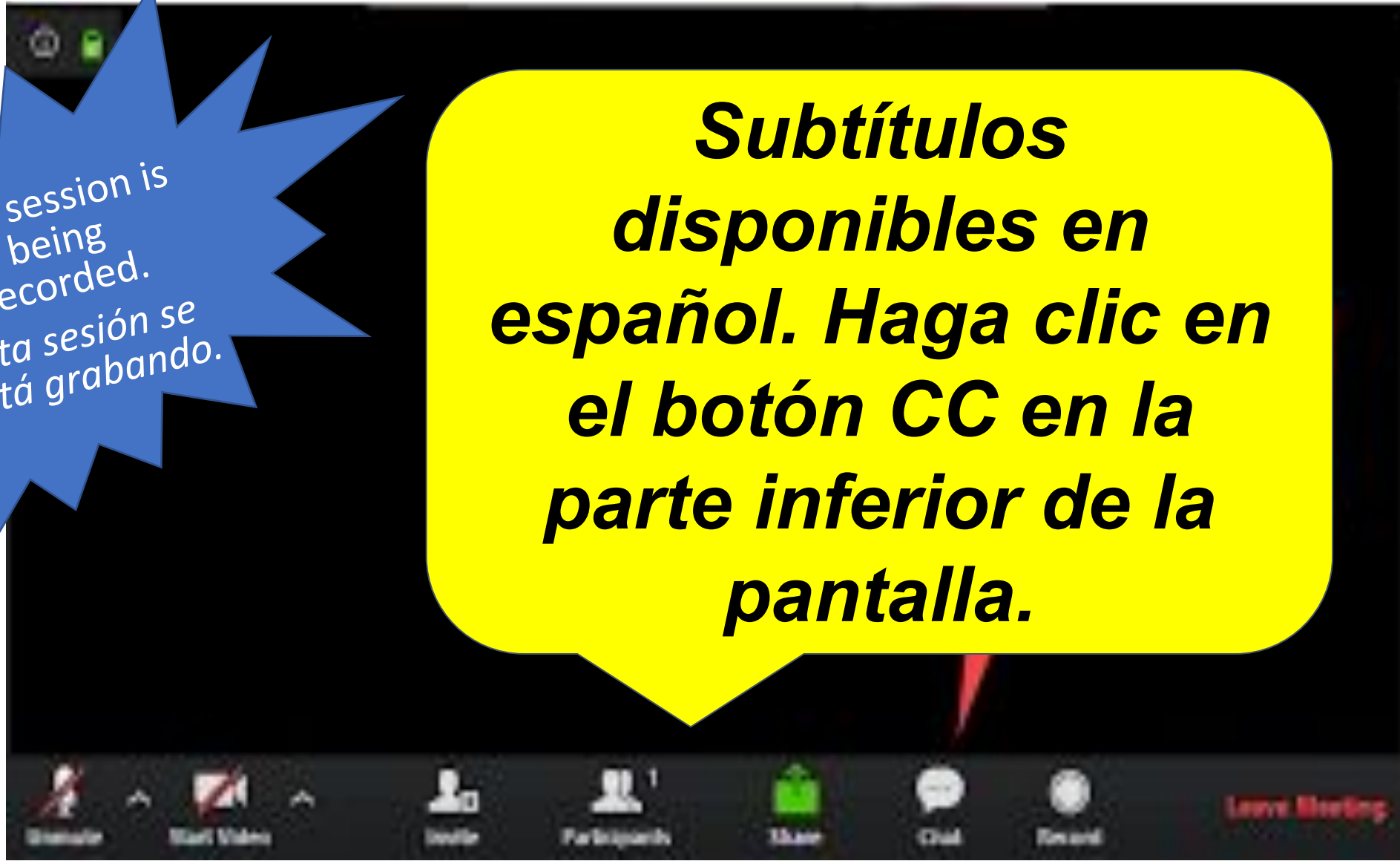


Please fill out the Google Form to log your attendance for tonight's session.  
*Complete el formulario de Google para registrar su asistencia a la sesión de esta noche.*

This session is  
being  
recorded.  
Esta sesión se  
está grabando.



**Subtítulos  
disponibles en  
español. Haga clic en  
el botón CC en la  
parte inferior de la  
pantalla.**



# Today's Goals

1

Learn about the academic expectations in grades K-2

2

Learn about the FAST assessment

3

Learn helpful strategies you can use at home to assist your child

---

# Session Protocols



## Questions

### *Preguntas*

Participants are asked to please refrain from calling out. There will be time at the end of the presentation to answer questions.

*Se ruega a los participantes que se abstengan de interrumpir la presentación. Habrá tiempo al final de la presentación para responder preguntas.*



## Technology Rules

### *Reglas tecnológicas*

Please keep your microphones muted during the presentation.

*Mantenga sus micrófonos en silencio durante la presentación.*



# ACADEMIC EXPECTATIONS

# English Language Arts Standards

## Emphasizes:

- Foundational Reading Skills (phonics, word analysis, fluency)
- Reading and analyzing literary texts and poetry
- Reading and analyzing informational texts
- Reading and analyzing different types of texts
- Writing (opinion, expository/informative, narrative)
- Collaboration and presentation
- Conventions
- Vocabulary

## English Language Arts (B.E.S.T. - Effective starting 2021-2022) ▾

Grade: K12 ▾

Grade: K ▾

Strand ELA.K.F: Foundational Skills

Strand ELA.K.R: Reading

Strand ELA.K.C: Communication

Strand ELA.K.V: Vocabulary

Grade: 1 ▾

Strand ELA.1.F: Foundational Skills

Strand ELA.1.R: Reading

Strand ELA.1.C: Communication

Strand ELA.1.V: Vocabulary

Grade: 2 ▾

Strand ELA.2.F: Foundational Skills

Strand ELA.2.R: Reading

Strand ELA.2.C: Communication

Strand ELA.2.V: Vocabulary

Grade: K ▾

Strand MA.K.NSO: Number Sense and Operations

Strand MA.K.AR: Algebraic Reasoning

Strand MA.K.M: Measurement

Strand MA.K.GR: Geometric Reasoning

Strand MA.K.DP: Data Analysis and Probability

Grade: 1 ▾

Strand MA.1.NSO: Number Sense and Operations

Strand MA.1.AR: Algebraic Reasoning

Strand MA.1.M: Measurement

Strand MA.1.FR: Fractions

Strand MA.1.GR: Geometric Reasoning

Strand MA.1.DP: Data Analysis and Probability

Grade: 2 ▾

Strand MA.2.NSO: Number Sense and Operations

Strand MA.2.AR: Algebraic Reasoning

Strand MA.2.M: Measurement

Strand MA.2.FR: Fractions

Strand MA.2.GR: Geometric Reasoning

Strand MA.2.DP: Data Analysis and Probability

# Mathematics Standards

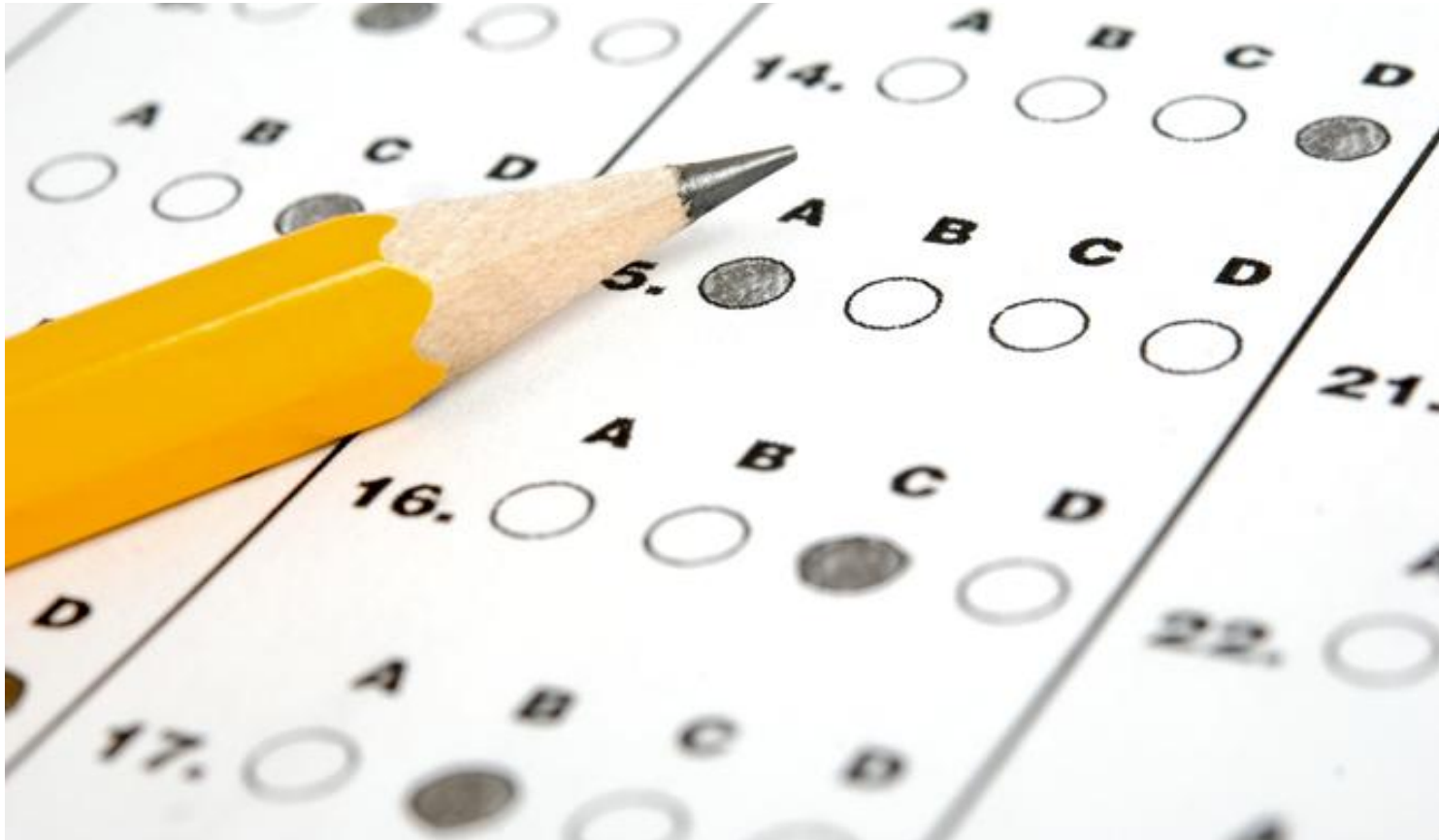
Emphasis on:

- Number sense – know numbers, counting, place value
- Addition and subtraction
- Comparing and classifying
- Working with time, data, and money
- Estimating and measuring length
- Identifying, describing, and classifying shapes



# Florida Assessment of Student Thinking (FAST)





## About the Test

- Computer-based
- Assesses Reading and Math skills

# How are students tested?

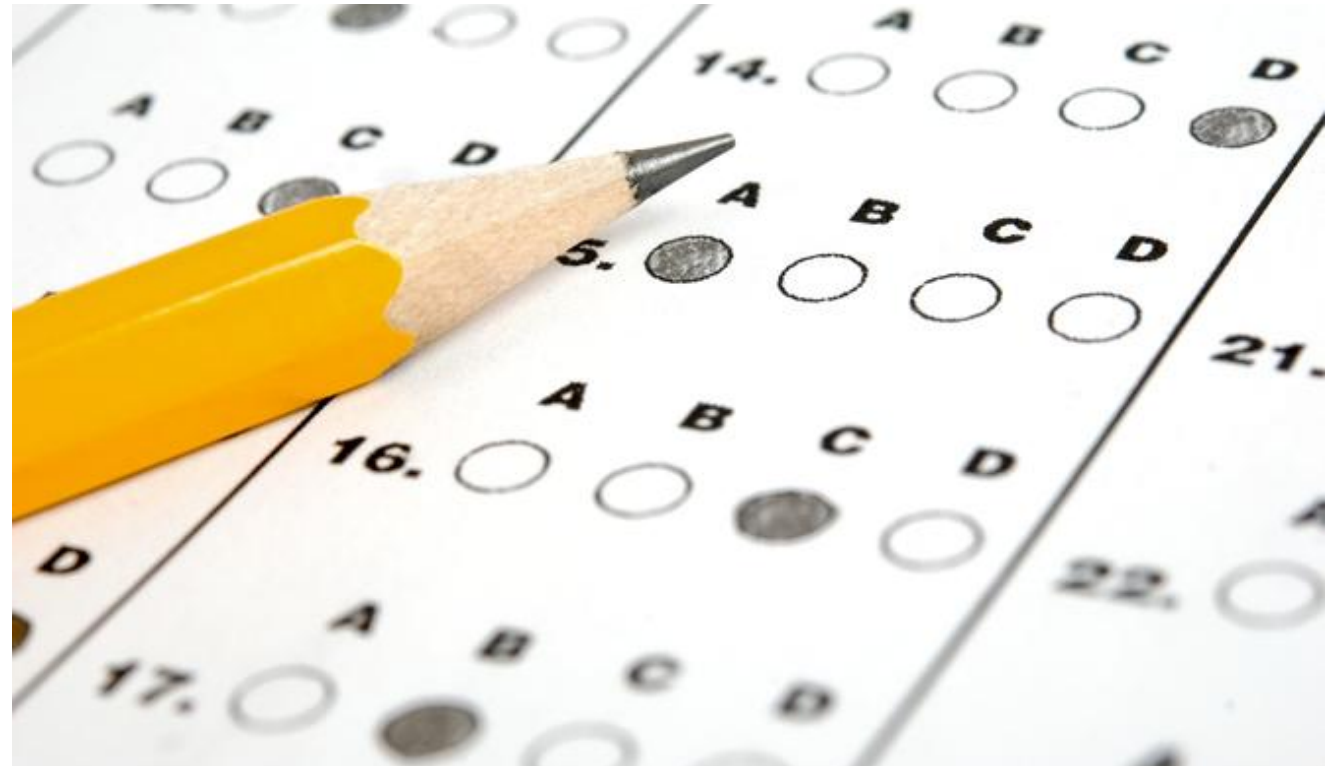
---

- FAST assessments are computer-adaptive tests taken on a computer or tablet.
- The questions get easier or more difficult depending on how the student responds, and each student will see different questions.
- Students are assessed in small groups



## About the Test

- Tests are administered in August/September, December, and May
- Must be completed in one session, in one day
  - STAR Early Literacy (10-20 minutes)
  - STAR Reading (15-20 minutes)
  - STAR Math (20-30 minutes)
- Multiple choice format
  - STAR Early Literacy (27 test items)
  - STAR Reading (34 test items)
  - STAR Math (34 test items)





Testing Dates:

\*PM3 Testing Window: April  
15 - May 31

Mrs. Logan loves her job helping a  
also likes to teach other people to hel

Which word tells about Mrs. Logan?

- 1 sad
- 2 fast
- 3 kind

### Florida B.E.S.T. Benchmark

ELA.2.R.1.1– Identify plot structure and desc

I play toy cars.

One has big stars.

This one is blue.

Mom plays \_\_\_\_\_!

Which word goes in the blank?

- 1 tag
- 2 too
- 3 ten

Next

### Florida B.E.S.T. Benchmark

ELA.K.R.1.4– Identify rhyme in a poem.

Grade: K

Grade: K

1/35

**Florida B.E.S.T. Benchmark**

MA.K.AR.1.3– Represent unknowns in equations to solve for an unknown.

Grade: 1

Grade: 2

1/35

**Florida B.E.S.T. Benchmark**

MA.2.NSO.1.2– Compare tens and ones. Demonstrate addition and subtraction expressions or equations.

Grade: 2

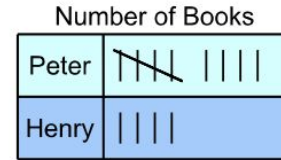
Grade: 2

1/35

Jessica Montero

Stop Test

Peter and Henry went to the library. They brought home many books.



How many **fewer** books did Henry bring home?

- A 5 fewer books
- B 4 fewer books
- C 9 fewer books

Next

**Florida B.E.S.T. Benchmark**

MA.2.DP.1.2– Interpret data represented with tally marks, tables, pictographs or bar graphs including solving addition and subtraction problems.

- Students will receive an overall scale score and percentile rank.
- Students will also receive the grade equivalent, which indicates the grade placement of students for whom a particular score is typical.
- Students will receive the Instructional Reading Level (IRL) and Lexile Range (Star Reading Only).

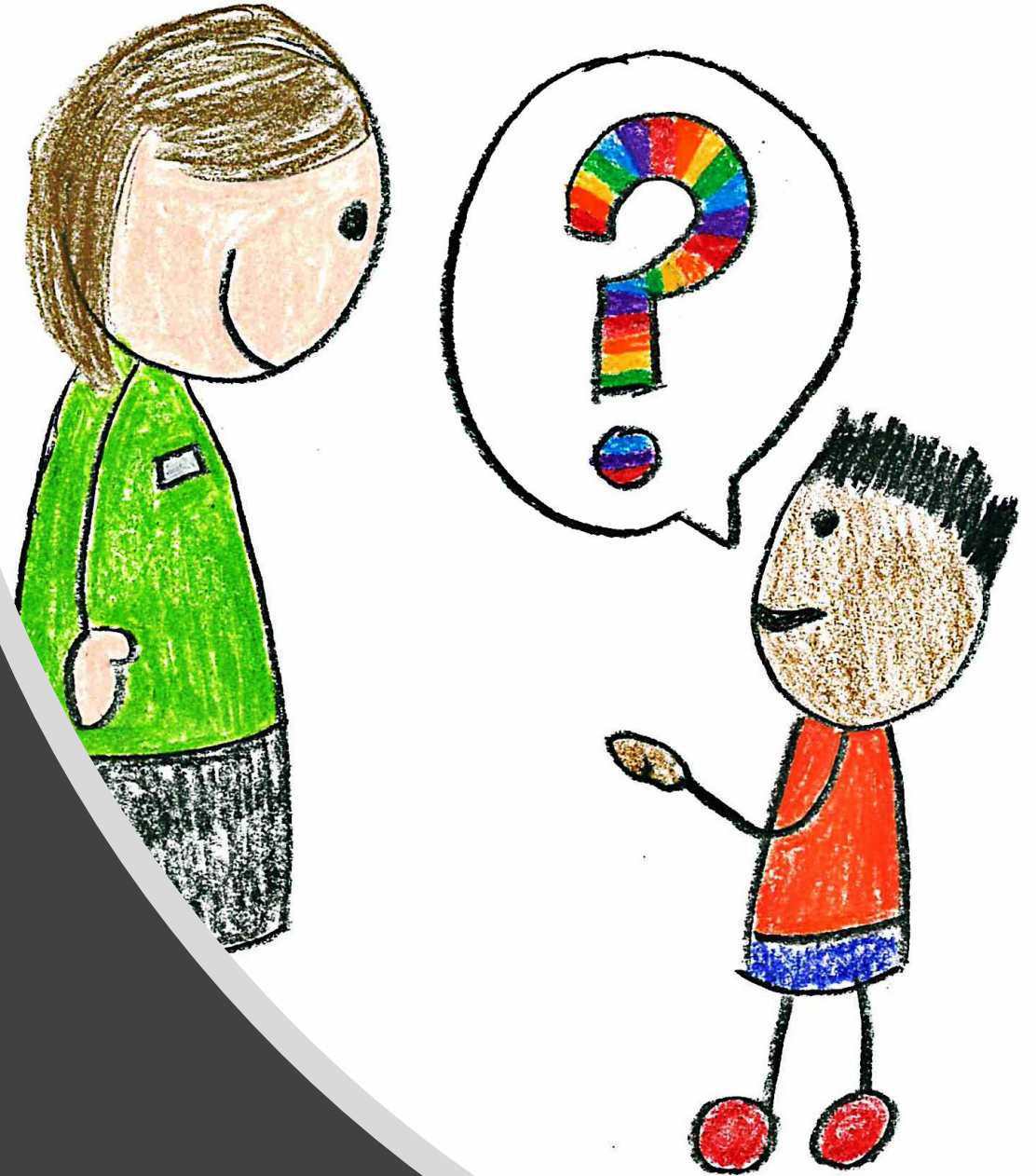
**Percentile rank: Tells you where your child scored related to the statewide norm.**

- Scores range from 1-99, 50 is the average
- Ex. A percentile score of 95 means your child scored as well as or better than 95% of students in the statewide norm.

# What do the scores mean?

# How can families help?

- Talk with students about their assignments and scores
- Have your students read different types of material aloud to you (books, flyers, magazines, news articles, brochures, etc.)
- Ask specific questions about the information they read and the problems they are solving
- Use math every day. Identify numbers everywhere, count and sort objects, tell time, add, subtract, talk about the shapes you see.
- Become familiar with the grade level standards and student resources ([www.floridastudents.org](http://www.floridastudents.org))
- Ensure students complete their digital program lessons.
- Explore resources available on <https://flfast.org/families.html>








**English Language Arts**

**305 Original Tutorials**  
123 Other Resources



**Mathematics**

**192 Original Tutorials**  
1346 Other Resources



**Science**

**290 Original Tutorials**  
411 Other Resources



**Social Studies**

**98 Original Tutorials**  
254 Other Resources

GRADES K-5

collapse ^

Mathematics - Grade Kindergarten

**13 Original Tutorials**  
30 Other Resources

Mathematics - Grade One

**15 Original Tutorials**  
58 Other Resources

Mathematics - Grade Two

**7 Original Tutorials**  
70 Other Resources

Mathematics - Grade Three

**16 Original Tutorials**  
115 Other Resources

Mathematics - Grade Four

**33 Original Tutorials**  
110 Other Resources

Mathematics - Grade Five

**27 Original Tutorials**

## Resources for Students & Families

- [FDOE B.E.S.T. Assessment Resources](#)
- [2023–2024 Florida Assessment of Student Thinking \(FAST\) Grades K–2 Fact Sheet](#)
- [2023–2024 Florida Assessment of Student Thinking \(FAST\) Grades 3–10 Fact Sheet](#)
- [Understanding FAST Grades 3–10 ELA and Mathematics and B.E.S.T. Algebra 1 and Geometry EOC Reports for Families](#)
- [Family Portal](#)

## Associated Resources

[Find More](#)

Preparing for Testing

After Testing

ABOUT THE ASSESSMENTS | TESTING TOOLS AND RESOURCES

### Statewide Assessment Schedules

Statewide Assessment Schedules established according to Florida Statute 1008.22 for FSA and NGSSS assessments. These schedules contain testing dates and windows for other statewide assessments, such as FSAA, ACCESS for ELLs, and NAEP.

TESTING TOOLS AND RESOURCES | ABOUT THE ASSESSMENTS

### Graduation Requirements for Florida's Statewide Assessments

THANK

YOU

*MARISSA GRACIA*

CHIEF OF DISTRICT AND SCHOOL SERVICES

*MGRACIA@NAEPARTNERS.ORG*

*786-265-9814*



**Any  
Questions?**